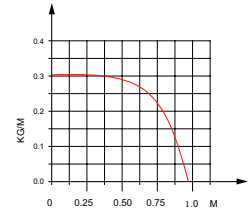
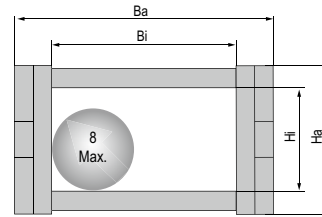


J10Q.1.B

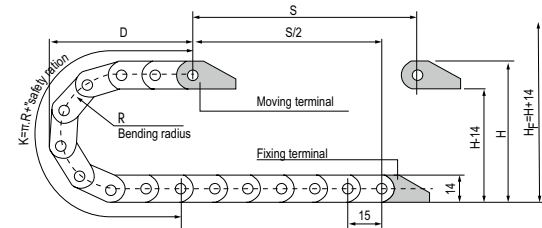
Miniature series of J10Q.1.B-Bridge type non-opening

JFLO[®]



© Suitable for 8mm or less of cable.

Basic technical data



J10Q.1.10B:

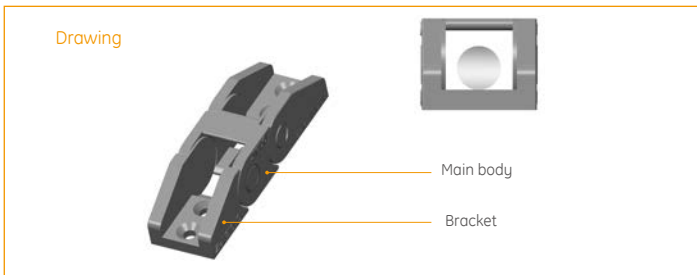
Pitch=15mm, link per meter=66, length of chain=S/2+K, S=stroke. K= π .R+ "safety ration"

J10Q.1.15B, J10Q.1.20B:

Pitch=20mm, link per meter=50, length of chain=S/2+K, S=stroke. K= π .R+ "safety ration"

R	18	28	38
H	50	70	90
D	40	50	60
K	90	120	150

Actual mounting height: $H_r = H + 13.5\text{mm}$ (load 0.2kg/m)

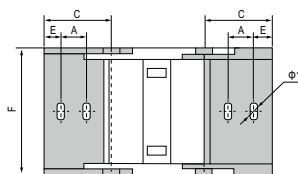


Cable Chain No.	Hi	Bi	Ha	Ba	Styles	Bending radius R	Bracket type and parameters							
							Applicable bracket type	Bore diameter $\Phi 1$	mm hole distance					Bracket No.
									A	B	C	D	E	
J10Q.1.10B	10	10	14	18	Q.B	18,28	X ₁	3.2	8		22	4	17	J10Q.1.10B-XJT
J10Q.1.15B	10	15	15	23	Q.B	18,28,38	X ₁	4*7L	10		C1=31 C2=27	8	23	J10Q.1.15B-XJT
J10Q.1.20B	10	20	15	28	Q.B	18,28	X ₁	3.2*7L	10		C1=30 C2=27	8	28	J10Q.1.20B-XJT

unit: mm

Note: B indicates that non-opening

Fix bracket type and parameters (See table)



X₁ type bracket

Order Example

Sample: inner height 10mm, inner width 10mm, radius 18mm, length 33 links/0.5 meter

Chain J10Q.1.10B R18 500mm /33 Links

Bracket J10Q.1.10B-XJT 1 Set

Accessories

Note: Various sizes can be customized according to customer requirements.